



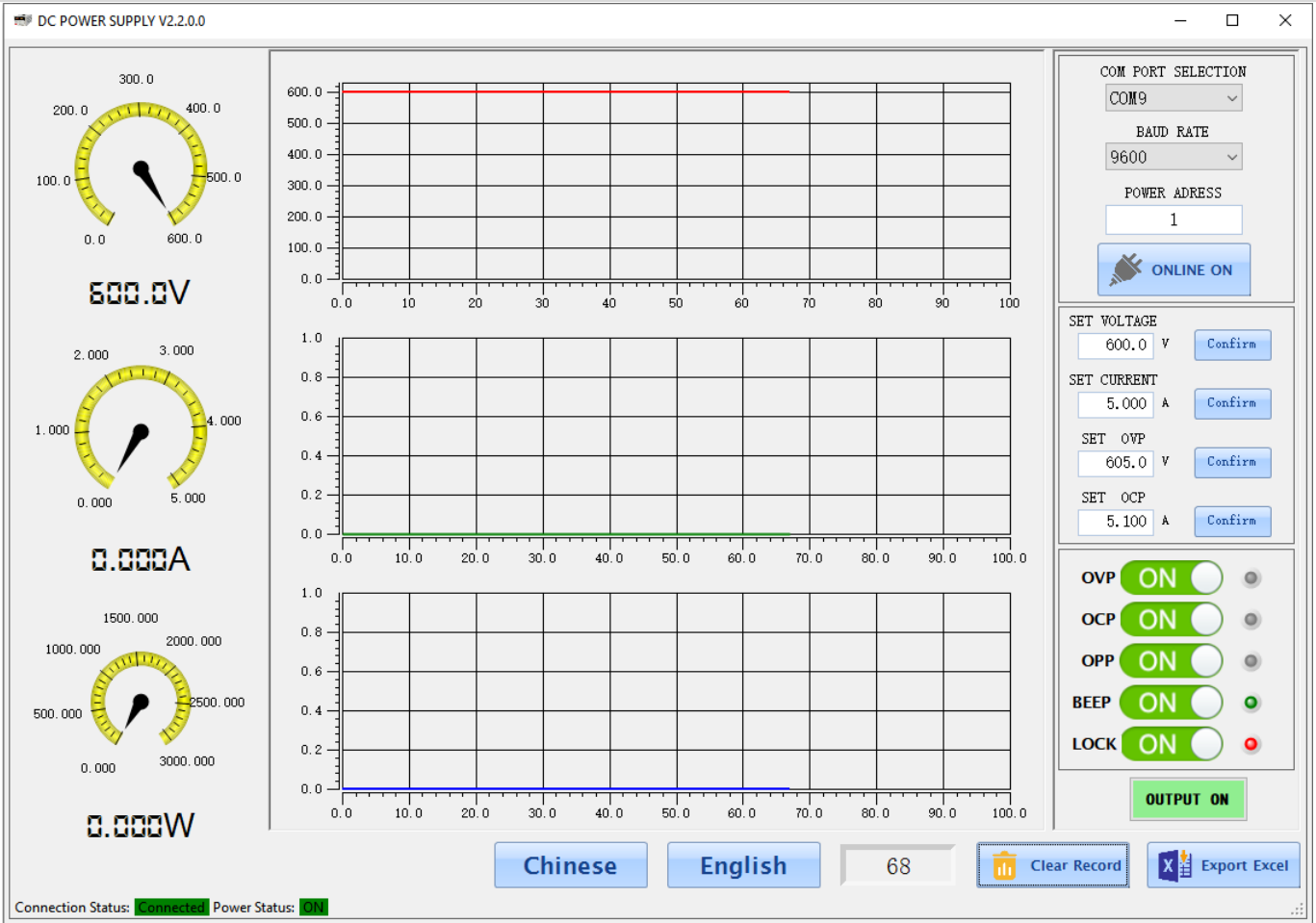
簡介

SPP 系列可程式直流電源是開關模式直流電源，具有 USB 介面進行通訊。最大功率可達 6KW，SPP 系列可全面客製化最大電壓 1000V、最大電流 300A。

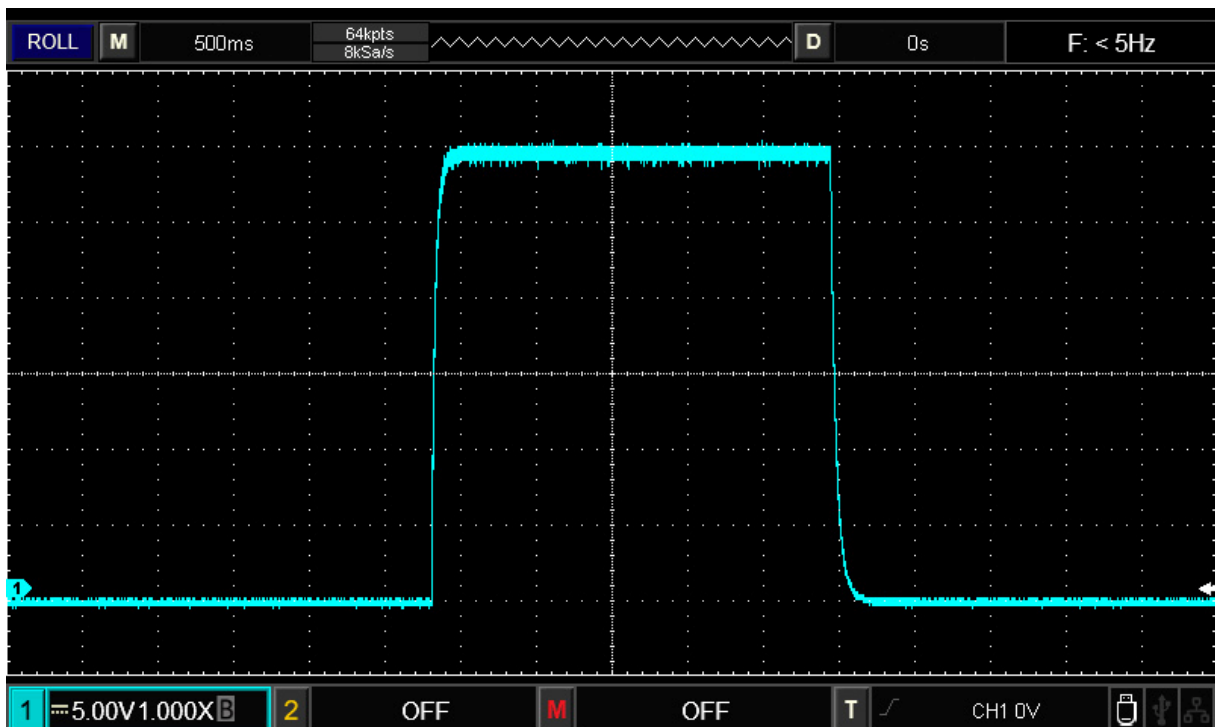
特點

- ✓ 最大輸出功率範圍從 500W 到 6kW
- ✓ 最大最大輸出電壓 1000V 輸出電流 300A
- ✓ MCU 數位控制與先進的 PWM 調節
- ✓ 設計緊湊、重量輕
- ✓ 定電壓 (CV) 和定電流 (CC) 操作；自動 CV/CC 切換
- ✓ 電壓、電流粗調和細調控制
- ✓ 過電壓、過電流、過溫度保護功能
- ✓ 內建蜂鳴器警報
- ✓ 面板鎖定和輸出 ON/OFF 功能
- ✓ 智慧型溫控散熱風扇
- ✓ USB 接口，支援 MODBUS-RTU 指令
- ✓ USB 介面可依要求改為 RS232 或 RS485 接口
- ✓ 可接受客製化規格和功能

Free PC control software



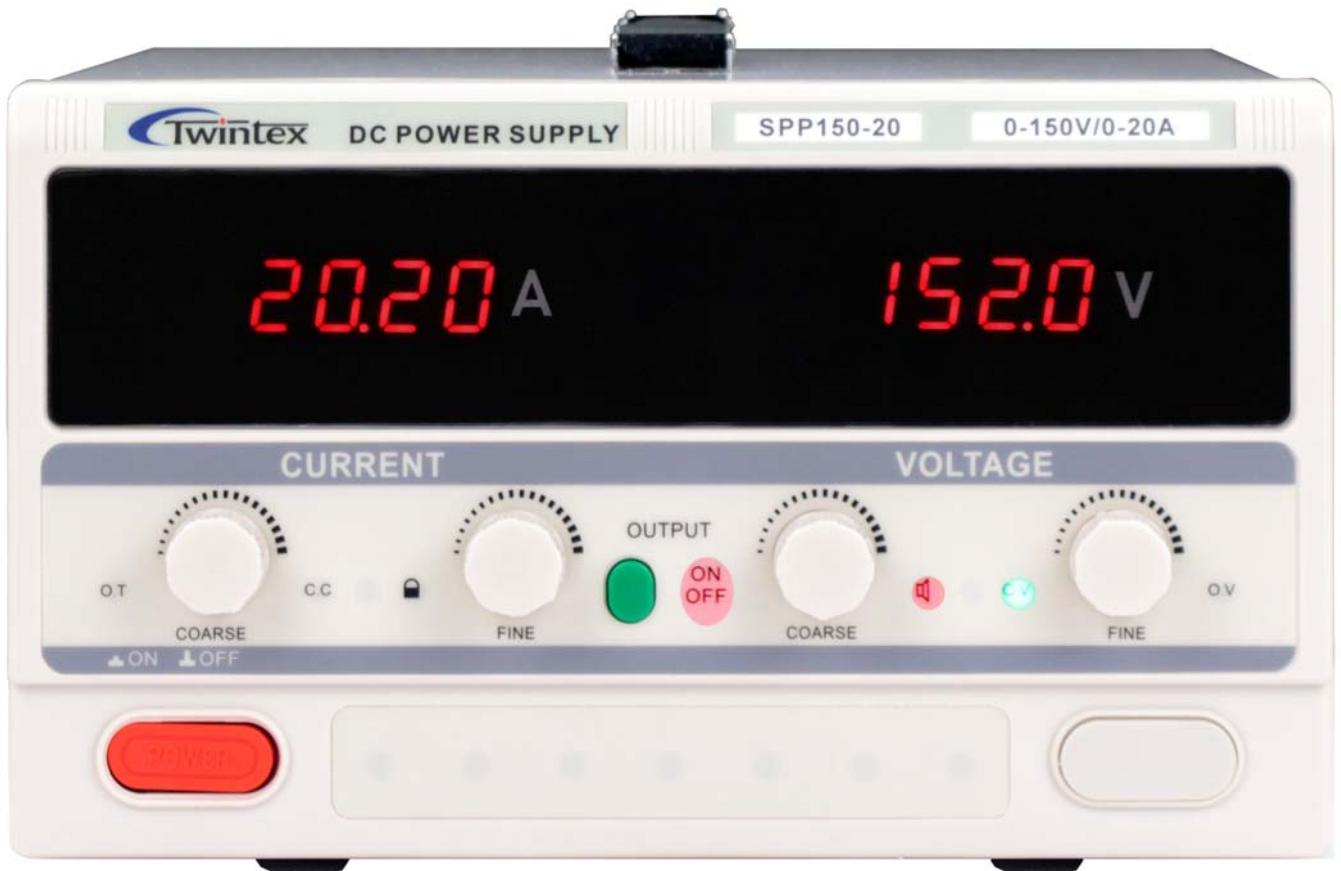
No overshoot



Product photos (M chassis)



Product photos (L chassis & XL chassis)



Specifications

Output power	500W to 6000W
Working mode	PWM
Output	
Output voltage	DC 0 to full range adjustable
Output current	DC 0 to full range adjustable
O.V.P. range	DC 1~110%FS
O.C.P. range	DC 1~110%FS
O.P.P. range	DC 1~100%FS
Line regulation	≤0.5%FS
Load regulation	≤0.5%FS
Ripple & Noise	≤0.5%FS rms
Setting accuracy	0.1%FS +1 digit
Display	
Voltmeter	4 digits LED display
Ammeter	4 digits LED display
Voltage resolution	0.000-9.999V; 00.00-99.99V; 000.0-999.9V
Current resolution	0.000-9.999A; 00.00-99.99A; 000.0-999.9A
Readback accuracy	0.1%FS +1 digit
Communications	
Interface	USB Device, can be changed to RS232 or RS485 interface at request
Protocols	ModBus-RTU
General	
Protection	Over voltage, over current, over temperature and over power protections
Operating environment	0°C~40°C, <80%RH
Storage environment	-10°C ~70°C, <80%RH
Power source	AC110V/220V±10%, 50/60Hz
Input module	Power socket or terminal block
Dimension	260x160x380mm (L chassis, 500W~3000W) 260x160x440mm (XL chassis, 1800W~5000W)
Weight	Approx. 4kg to 9kg

Specifications are subject to change without prior notice.

Selection guide

Model	Rated Voltage	Rated Current	Rated Power	Display Resolution	
M chassis, 200Wx150Hx285D mm, 200W~1800W					
SPP5-120	0~5V	0~120A	600W	1mV	100mA
SPP15-30	0~15V	0~30A	450W	10mV	10mA
SPP15-50	0~15V	0~50A	750W	10mV	10mA
SPP15-60	0~15V	0~60A	900W	10mV	10mA
SPP15-80	0~15V	0~80A	1200W	10mV	10mA
SPP15-100	0~15V	0~100A	1500W	10mV	100mA
SPP30-20	0~30V	0~20A	600W	10mV	10mA
SPP30-30	0~30V	0~30A	900W	10mV	10mA
SPP30-40	0~30V	0~40A	1200W	10mV	10mA
SPP30-50	0~30V	0~50A	1500W	10mV	10mA
SPP30-60M	0~30V	0~60A	1800W	10mV	10mA
SPP50-20	0~50V	0~20A	1000W	10mV	10mA
SPP50-30	0~50V	0~30A	1500W	10mV	10mA
SPP60-10	0~60V	0~10A	600W	10mV	10mA
SPP60-20	0~60V	0~20A	1200W	10mV	10mA
SPP60-30M	0~60V	0~30A	1800W	10mV	10mA
SPP100-5	0~100V	0~5A	500W	100mV	1mA
SPP100-6	0~100V	0~6A	600W	100mV	1mA
SPP100-10	0~100V	0~10A	1000W	100mV	10mA
SPP100-15	0~100V	0~15A	1500W	100mV	10mA
SPP120-5	0~120V	0~5A	600W	100mV	1mA
SPP120-10	0~120V	0~10A	1200W	100mV	10mA
SPP150-3	0~150V	0~3A	450W	100mV	1mA
SPP150-5	0~150V	0~5A	750W	100mV	1mA
SPP150-10	0~150V	0~10A	1500W	100mV	10mA
SPP200-1	0~200V	0~1A	200W	100mV	1mA
SPP200-2	0~200V	0~2A	400W	100mV	1mA
SPP200-3	0~200V	0~3A	600W	100mV	1mA
SPP200-5	0~200V	0~5A	1000W	100mV	1mA
SPP220-1	0~220V	0~1A	220W	100mV	1mA
SPP220-2	0~220V	0~2A	440W	100mV	1mA
SPP220-3	0~220V	0~3A	660W	100mV	1mA
SPP220-5	0~220V	0~5A	1100W	100mV	1mA
SPP250-1	0~250V	0~1A	250W	100mV	1mA
SPP250-2	0~220V	0~2A	500W	100mV	1mA
SPP250-3	0~250V	0~3A	750W	100mV	1mA
SPP250-4	0~250V	0~4A	1000W	100mV	1mA
SPP250-5	0~250V	0~5A	1250	100mV	1mA
SPP300-1	0~300V	0~1A	300W	100mV	1mA
SPP300-2	0~300V	0~2A	600W	100mV	1mA
SPP300-3	0~300V	0~3A	900W	100mV	1mA
SPP300-5	0~300V	0~5A	1500W	100mV	1mA
SPP400-1	0~400V	0~1A	400W	100mV	1mA

SPP 系列可程式直流電源供應器



SPP400-2	0~400V	0~2A	800W	100mV	1mA
SPP400-3	0~400V	0~3A	1200W	100mV	1mA

Model	Rated Voltage	Rated Current	Rated Power	Display Resolution	
L chassis, 260Wx160Hx380D mm, 500W~3000W					
SPP5-200	0~5V	0~200A	1000W	1mV	100mA
SPP15-120	0~15V	0~120A	1800W	10mV	100mA
SPP25-100	0~25V	0~100A	2500W	10mV	100mA
SPP30-60	0~30V	0~60A	1800W	10mV	10mA
SPP30-80	0~30V	0~80A	2400W	10mV	10mA
SPP30-1H	0~30V	0~100A	3000W	10mV	100mA
SPP50-40	0~50V	0~40A	2000W	10mV	10mA
SPP50-50	0~50V	0~50A	2500W	10mV	10mA
SPP50-60	0~50V	0~60A	3000W	10mV	10mA
SPP60-30	0~60V	0~30A	1800W	10mV	10mA
SPP60-40	0~60V	0~40A	2400W	10mV	10mA
SPP60-50	0~60V	0~50A	3000W	10mV	10mA
SPP80-20	0~80V	0~20A	1600W	10mV	10mA
SPP80-30	0~80V	0~30A	2400W	10mV	10mA
SPP100-20	0~100V	0~20A	2000W	100mV	10mA
SPP100-25	0~100V	0~25A	2500W	100mV	10mA
SPP100-30	0~100V	0~30A	3000W	100mV	10mA
SPP120-20	0~120V	0~20A	2400W	100mV	10mA
SPP150-20	0~150V	0~20A	3000W	100mV	10mA
SPP200-10	0~200V	0~10A	2000W	100mV	10mA
SPP220-10	0~220V	0~10A	2200W	100mV	10mA
SPP250-10	0~250V	0~10A	2500W	100mV	10mA
SPP400-5	0~400V	0~5A	2000W	100mV	1mA
SPP500-1	0~500V	0~1A	500W	100mV	1mA
SPP500-2	0~500V	0~2A	1000W	100mV	1mA
SPP500-3	0~500V	0~3A	1500W	100mV	1mA
SPP500-5	0~500V	0~5A	2500W	100mV	1mA
SPP600-1	0~600V	0~1A	600W	100mV	1mA
SPP600-2	0~600V	0~2A	1200W	100mV	1mA
SPP600-3	0~600V	0~3A	1800W	100mV	1mA
SPP800-1	0~800V	0~1A	800W	100mV	1mA
SPP800-2	0~800V	0~2A	1600W	100mV	1mA
SPP800-3	0~800V	0~3A	2400W	100mV	1mA
SPP1000-1	0~1000V	0~1A	1000W	1V	1mA
SPP1000-2	0~1000V	0~2A	2000W	1V	1mA
SPP1000-3	0~1000V	0~3A	3000W	1V	1mA

Model	Rated Voltage	Rated Current	Rated Power	Display Resolution	
XL chassis, 260Wx160Hx440D mm, 1800W~6000W					
SPP10-250	0~10V	0~2500A	1250W	1mV	100mA
SPP15-150	0~15V	0~150A	2250W	10mV	100mA
SPP15-200	0~15V	0~200A	3000W	10mV	100mA
SPP30-120	0~30V	0~120A	3600W	10mV	100mA
SPP30-150	0~30V	0~150A	4500W	10mV	100mA
SPP30-200	0~30V	0~200A	6000W	10mV	100mA
SPP50-80	0~50V	0~80A	4000W	10mV	10mA
SPP50-100	0~50V	0~100A	5000W	10mV	100mA
SPP50-120	0~50V	0~120A	6000W	10mV	100mA
SPP60-60	0~60V	0~60A	3600W	10mV	10mA
SPP60-80	0~60V	0~80A	4800W	10mV	10mA
SPP60-100	0~60V	0~100A	6000W	10mV	100mA
SPP80-40	0~80V	0~40A	3400W	10mV	10mA
SPP80-50	0~80V	0~50A	4000W	10mV	10mA
SPP80-60	0~80V	0~60A	4800W	10mV	10mA
SPP100-40	0~100V	0~40A	4000W	100mV	10mA
SPP100-50	0~100V	0~50A	5000W	100mV	10mA
SPP100-60	0~100V	0~60A	6000W	100mV	10mA
SPP120-30	0~120V	0~30A	3600W	100mV	10mA
SPP120-40	0~120V	0~40A	4800W	100mV	10mA
SPP120-50	0~120V	0~50A	6000W	100mV	10mA
SPP150-30	0~150V	0~30A	4500W	100mV	10mA
SPP150-40	0~150V	0~40A	6000W	100mV	10mA
SPP200-20	0~200V	0~20A	4000W	100mV	10mA
SPP200-25	0~200V	0~25A	5000W	100mV	10mA
SPP200-30	0~200V	0~30A	6000W	100mV	10mA
SPP220-20	0~220V	0~20A	4400W	100mV	10mA
SPP250-20	0~250V	0~20A	5000W	100mV	10mA
SPP300-10	0~300V	0~10A	3000W	100mV	10mA
SPP300-15	0~300V	0~15A	4500W	100mV	10mA
SPP300-20	0~300V	0~20A	6000W	100mV	10mA
SPP400-10	0~400V	0~10A	4000W	100mV	10mA
SPP400-15	0~400V	0~15A	6000W	100mV	10mA
SPP500-10	0~500V	0~10A	5000W	100mV	10mA
SPP600-5	0~600V	0~5A	3000W	100mV	1mA
SPP600-8	0~600V	0~8A	4800W	100mV	1mA
SPP800-5	0~800V	0~5A	4000W	100mV	1mA
SPP800-6	0~800V	0~6A	4800W	100mV	1mA